

PHOTOGRAPHS, AERIAL IMAGES & MAPS OF DONACARNEY AND MORNINGTON





An old lighthouse



Old Church in Donacarney



In the Old Church's Graveyard



Donacarney House

The Maiden Tower and Lady's Finger, Mouth
of the Boyne.



© The
Irish Historical
Image Company

Mornington





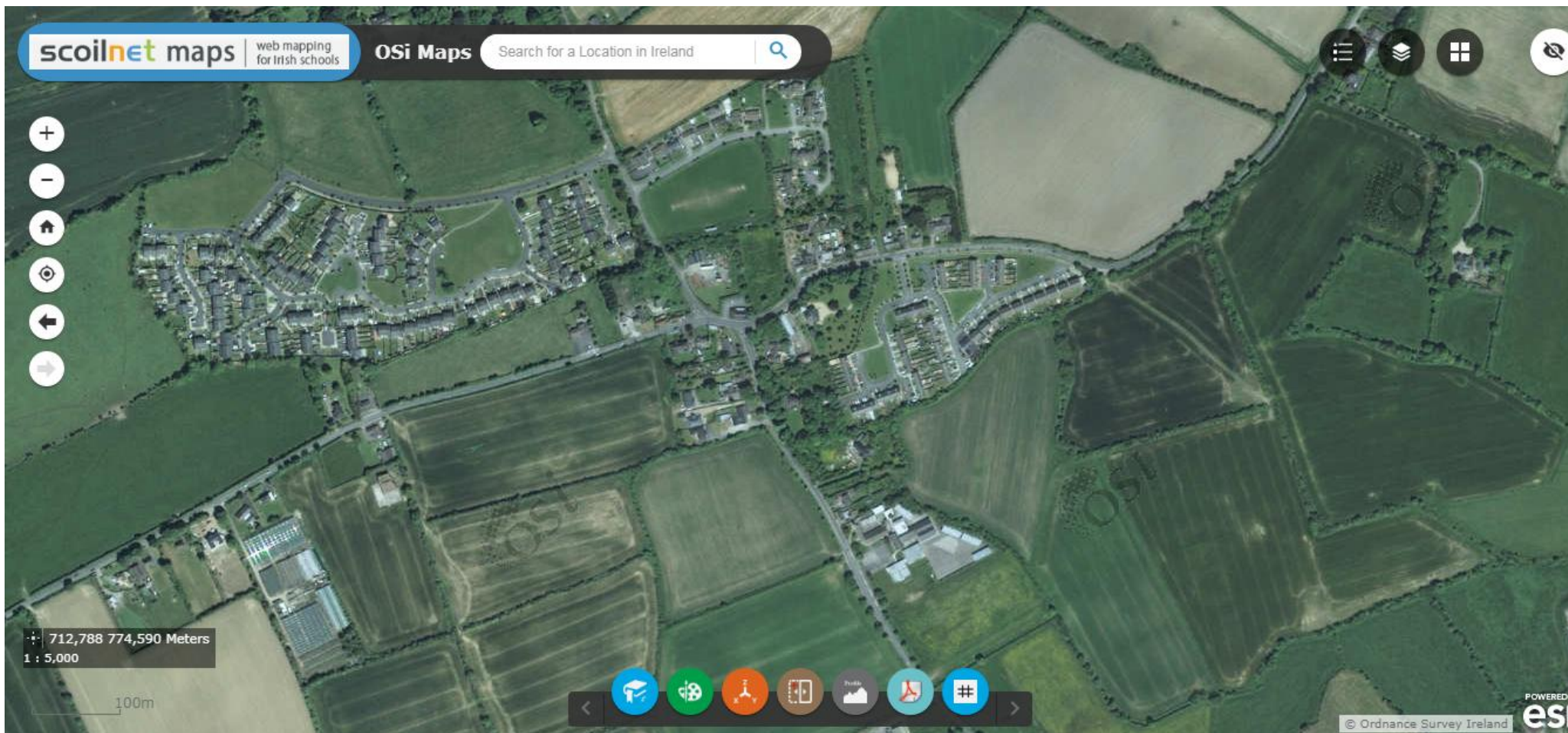
©The

Irish Historical
Picture Company

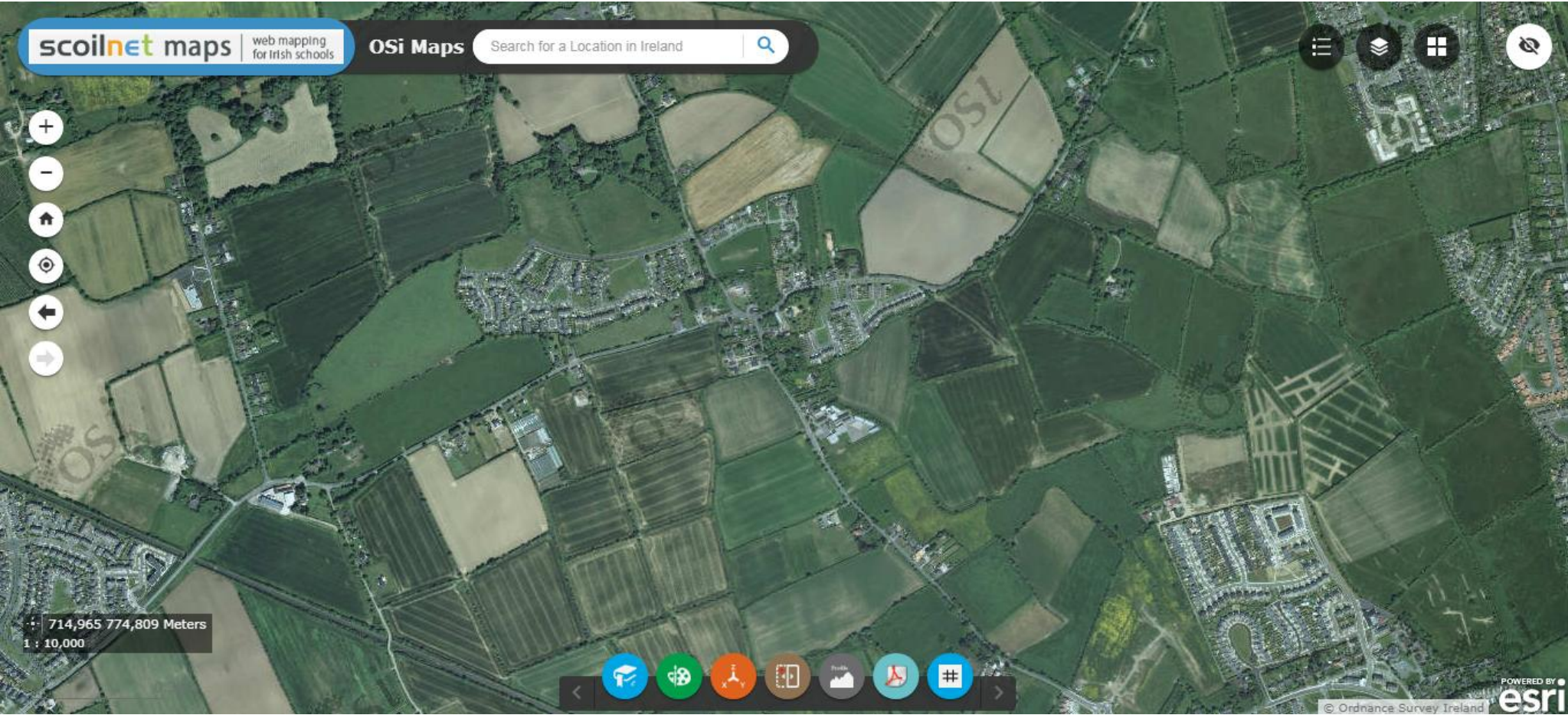
MAIDENS TOWER DROGHEDA

ПОМЪНИКЪ ДРОГЪДЕА.

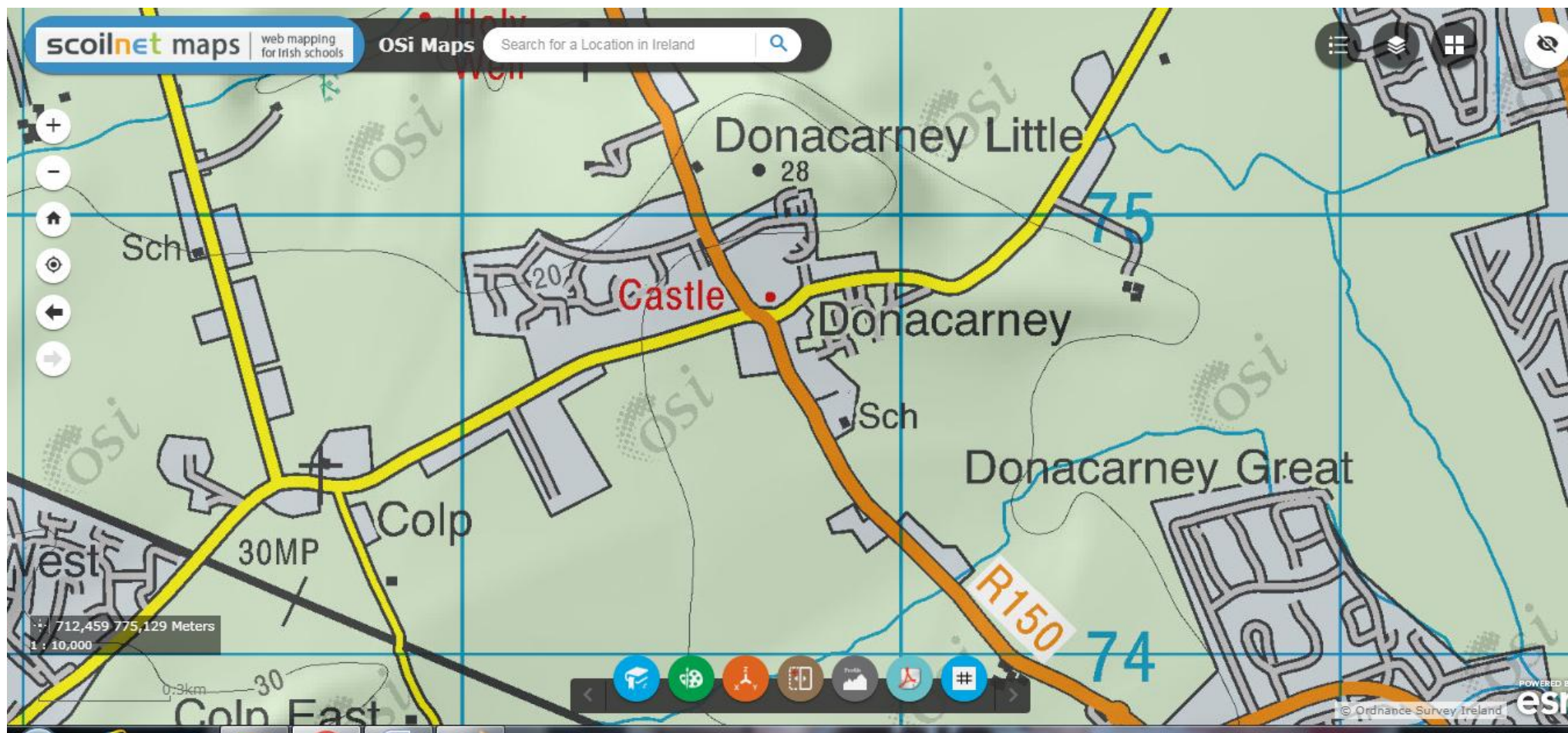
Aerial Image of Donacarney 2010 - Scale 1:5,000



Aerial Image of Donacarney 2010 - Scale 1:10,000



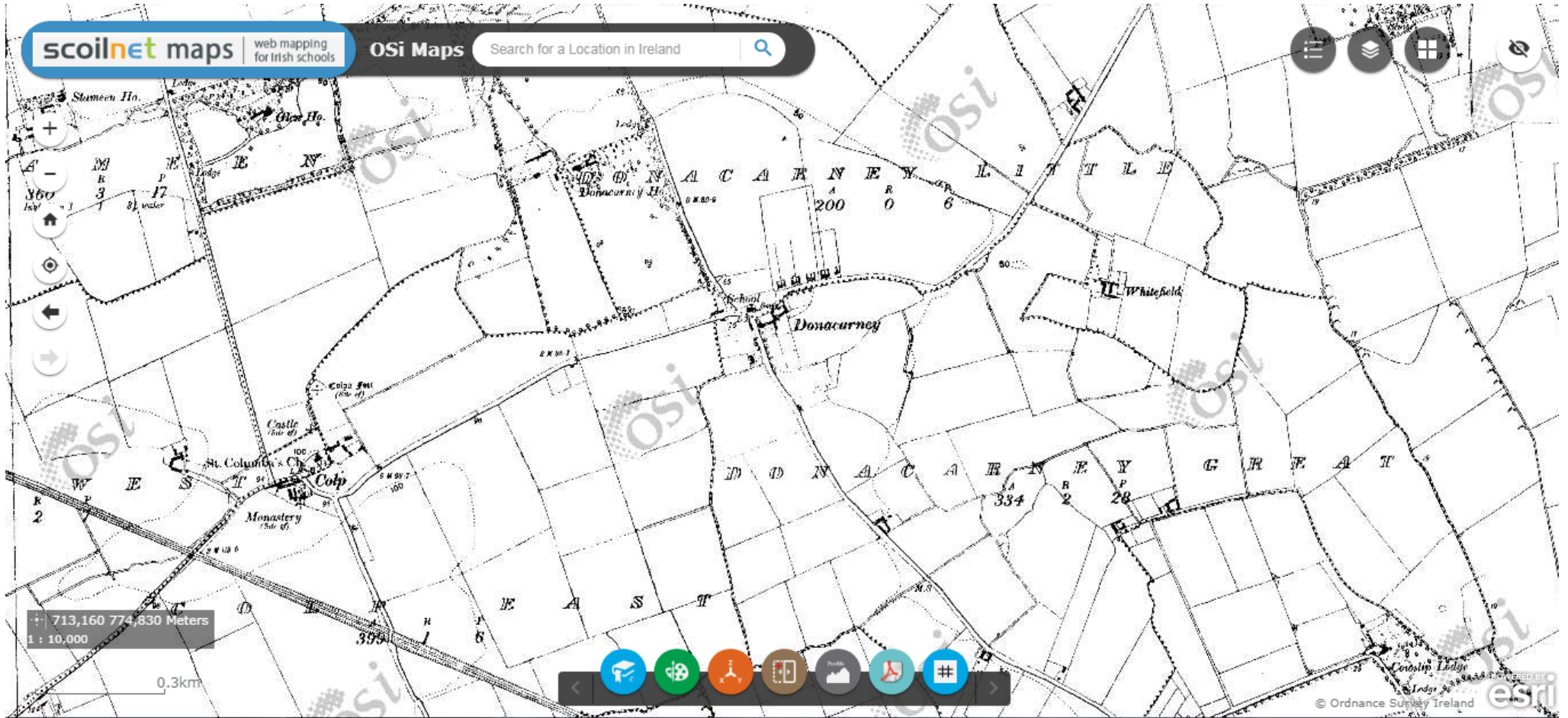
Modern Map of Donacarney 2012 - Scale 1:10,000



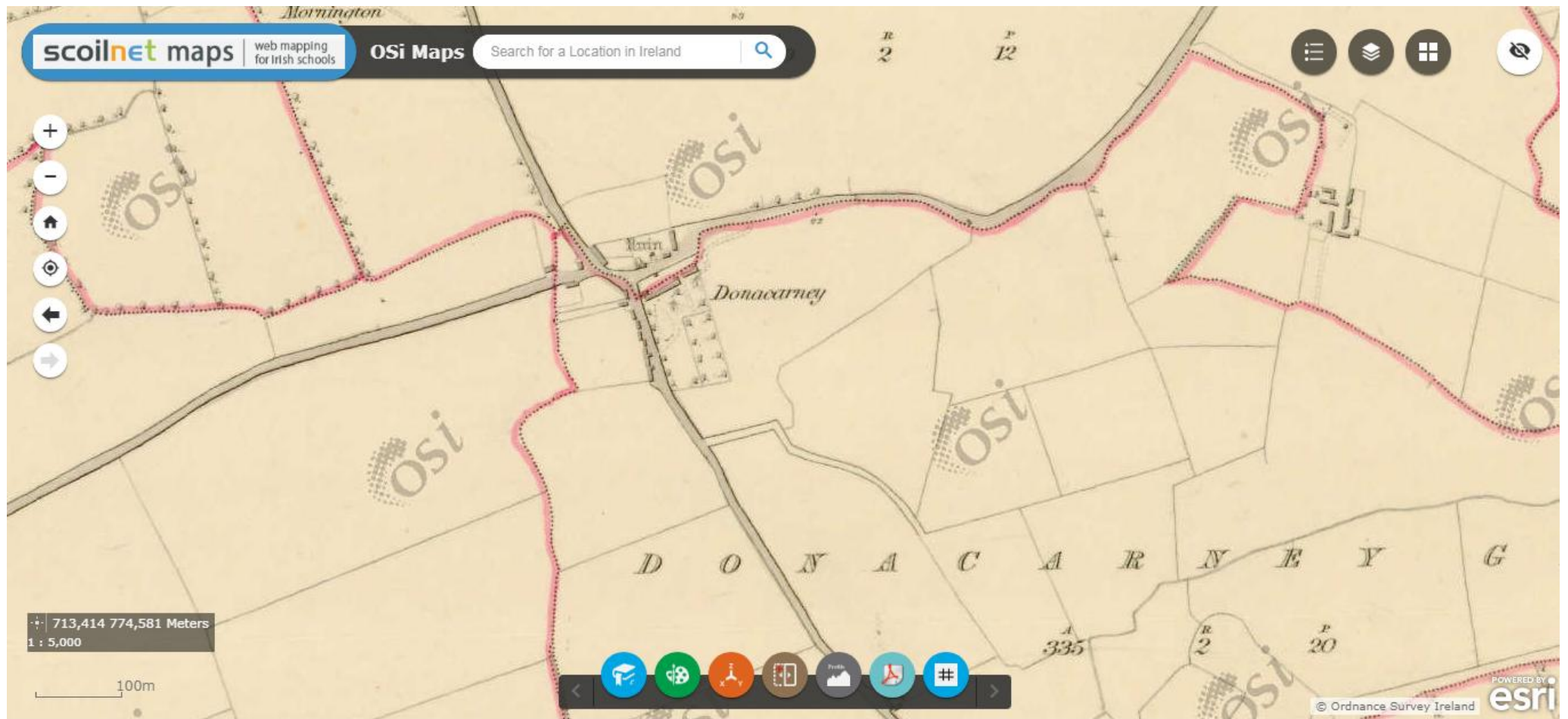
Map of Donacorney from the 1940's - Scale 1:5,000



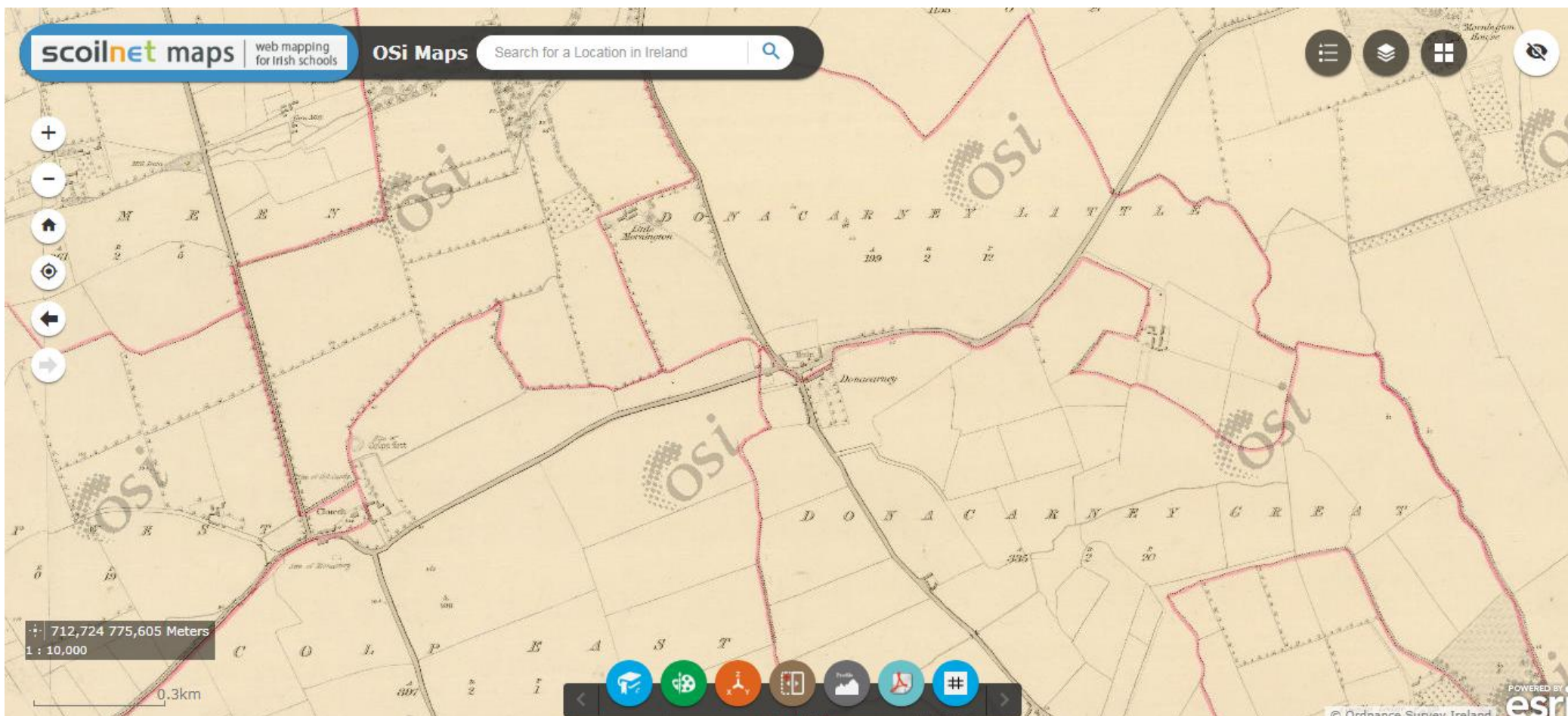
Map of Donacorney from the 1940's - Scale 1:10,000



Historic of Donacarney from the 1829 - Scale 1:5,000



Historic map of Donacarney from 1829 - Scale 1:10,000



Write Answers to Questions – You do not need to write answers to those questions in *italics* with the word *THINK*.

1. All of these maps have been taken from Scoilnet maps. They use the OSI maps. What do the letters OSI stand for?
2. In the 1829 map of Donacarney (scale 1:5,000) there is a ruin marked near the road junction. However in the modern map it is not referred to as a ruin. What does the most recent OSI map refer to this building as? *Think.... what does that building look like now?*
3. Drogheda Grammar School was originally established in 1669, but in a building different to its current home. Which map first notes 'Stameen House' as a school? A) 1829 B) 1940s or C) 2010 Modern map.
4. Donacarney National School is marked on 1940's map, but it is not in its current location. Why might the school have moved from its original building? *Think... was this the only move the school has made. Do you know anything about the history of the school? There was no school marked in the 1829 map, can you think why that might have been? What type of schools were common in Ireland at that time?*
5. There is a big increase in the amount of housing between older maps and the modern map. Has there been any further increase in housing in the local area since the modern map and aerial photographs? What are the names of these new estates? *Think....are any of the houses that were marked on the 1829 or 1940s map still there today? Has there been a change in the type of housing built since the older maps?*
6. From looking at the older maps and photographs of Donacarney & Mornington, I might say that fishing and perhaps agriculture were important industries (work) for residents of the area. What evidence is in the photographs or older maps to support this opinion? *Think.... are these still the main industries for residents of the area? Is there a greater variety of jobs available to residents today rather than 80 or almost 200 years ago?*
7. *Think...many of the old photographs show local landmarks. Are any of those landmarks still in use? Have you visited any of them? What do they look like now?*
8. *Think....Look at the photograph of the old Mornington Church. Have you ever visited it, or been in the graveyard? If you have what was the oldest date that you found on a headstone?*

Check out these great websites for great information you may not know about our local area:

<https://wikivisually.com/wiki/Donacarney>

<http://www.realtnamaradonacarney.ie/history.html>

[https://kids.kiddle.co/Mornington, County Meath](https://kids.kiddle.co/Mornington,_County_Meath)

<http://droghedamuseum.blogspot.com/2013/07/the-maiden-tower-mornington.html>

When you are conducting your mini project on Mornington / Donacarney, take look at the Small World Chapter on Sligo pg. 26+27 for ideas.

Make sure you include:

- The name of the area – what is its meaning and what that might tell us about the area – the above websites will help with that.
- How the area has changed over the past 100 years in terms of
 - housing,
 - facilities (shops, schools, churches etc)
 - roads
 - industries / jobs etc.
- Name some of the local landmarks – if you had visitor coming to stay, where might you bring them locally?
- If you can, maybe take some photos of a local landmark or two to include in your mini-project. If you cannot take pictures yourself there are lots on google images (if you are searching on google for images to use, you should go to advanced settings and indicate images only that are “free to use and share”)